


BEYOND
FLOORING



CARPET TILES

 Mohawk Group

Product catalogue

SC079AHC008Z - CT Art Style - 05/2021



 ForceOne  Mohawk Group

百僱企業股份有限公司
新北市林口區文化一路一段238號1樓
T 02. 2602. 3208 F 02. 2602. 7326
E info@force1.com.tw

www.force1.com.tw



BEYOND FLOORING

“

We offer top-quality products,
impeccable service,
innovative, sustainable production
and a proven track record...

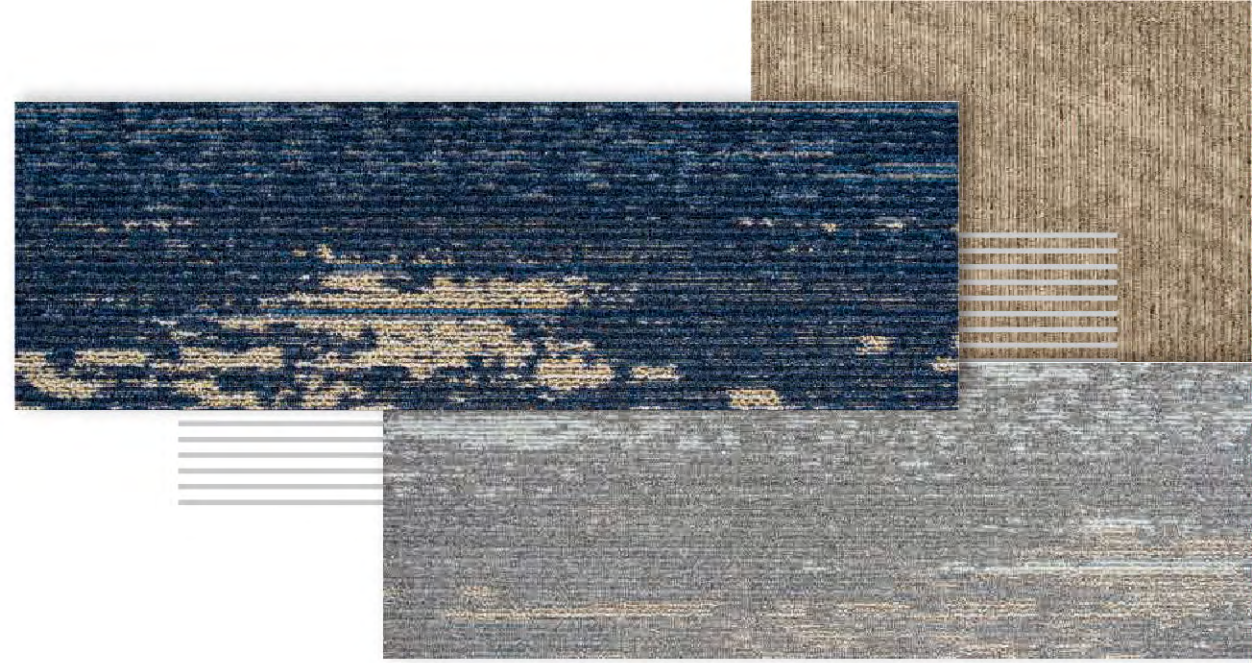
But most of all,
we love helping to
achieve your goals.”

About IVC

IVC 是 IVC 集團的商業部門，致力於為公司和辦公室、零售、酒店和休閒、住家、教育和醫療保健等項目創建獨特的地板。

成立於 1997 年，是歐洲領先的地毯磚、高級乙烯基瓷磚 (LVT) 和乙烯基板材的製造商。在比利時、盧森堡、美國和俄羅斯擁有 1,600 名員工和 10 個生產單位，每年生產的地板面積超過 1.8 億平方米。

自 2015 年起，IVC 集團成為世界上所有地板產品的市場領導者—莫霍克工業公司的一部分，其擁有 130 多年的傳統工藝技術。這擴大了 IVC 的全球影響力，無論您身在何處，我們可以為您提供產品服務。



在漸漸分裂的世界中，藝術將人們重新聚集在一起。
藝術作為一種通用的語言和改革的推動者，藝術介入以激發、
治愈和解脫。

IVC 運用三種系列產品將藝術的力量傳遞：Art Intervention,
Art Exposure 和 Art Style





The Collection

#01
CREATIVE SPARK

#02
TRUSTED GUIDE

#03
ACADEMIC VIEW

#04
SHARED PATH

#05
METALLIC PATH

BEYOND
FLOORING

Creative Spark



Creative Spark

Art Intervention

- Construction: tufted 1/10" gauge loop
- Backing: EcoFlex™ Statera
- Pile material: ColorStrand®
100% solution dyed Pa6 (40% recycled content)
- Dimensions - m²/box: 50 x 50 cm - 5 m²
- Pile weight: 540 g/m²
- Pile thickness: 3,1 mm
- Total thickness: 6,3 mm
- Wear classification: 33 / LC1
- Fire classification: Bfl-s1
- Impact sound reduction: ΔLw = 32 dB
- Sound absorption: 0,15 αw
- GUT-Prodís number: 3AA1D4DF



LRV = Light Reflectance Value according to BS 8493, L = according to CIE L*a*b* colour space



Creative Spark ○
979

Trusted Guide ○
958

Trusted Guide

Art Exposure

- Construction: tufted 1/12" gauge loop
- Backing: EcoFlex™ Statera
- Pile material: ColorStrand®
100% solution dyed Pa6 (40% recycled content)
- Dimensions - m²/box: 50 x 50 cm - 5 m²

- Pile weight: 600 g/m²
- Pile thickness: 3,3 mm
- Total thickness: 7 mm
- Wear classification: 33 / LC1

- Fire classification: Bfl-s1
- Impact sound reduction: ΔLw = 25 dB
- Sound absorption: 0,15 αw
- GUT-Prodís number: 1F0B31AD

Trusted Guide

BEYOND
FLOORING



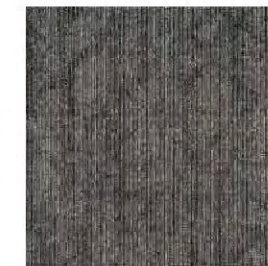
958 LRV: 13,06 - L 42,84



853 LRV: 15,95 - L 46,89



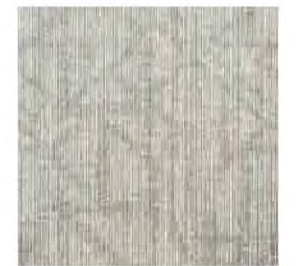
569 LRV: 5,43 - L 27,91



989 LRV: 5,55 - L 28,24



959 LRV: 10,64 - L 38,94



924 LRV: 9,33 - L 36,48

LRV = Light Reflectance Value according to BS 8493, L = according to CIE L*a*b* colour space



Academic View

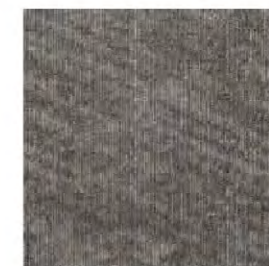
Art Exposure

924

- Construction: tufted 1/12" gauge loop
- Backing: EcoFlex™ Statera
- Pile material: ColorStrand®
100% solution dyed Pa6 (40% recycled content)
- Dimensions - m²/box: 50 x 50 cm - 5 m²
- Pile weight: 600 g/m²
- Pile thickness: 3,4 mm
- Total thickness: 7 mm
- Wear classification: 33 / LC1
- Fire classification: Bfl-s1
- Impact sound reduction: ΔLw = 25 dB
- Sound absorption: 0,20 αw
- GUT-Prodís number: 32EF772D

Academic View

BEYOND
FLOORING



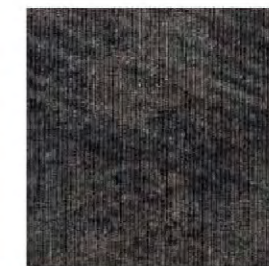
958 LRV: 12,97 - L 42,68



853 LRV: 15,95 - L 46,84



569 LRV: 5,42 - L 27,87



989 LRV: 5,51 - L 28,10



959 LRV: 10,37 - L 38,43



924 LRV: 19,10 - L 50,76

LRV = Light Reflectance Value according to BS 8493, L = according to CIE L*a*b* colour space



569

853

Shared Path

Art Style

- Construction: tufted 1/12" gauge loop
- Backing: EcoFlex™ Statera
- Pile material: ColorStrand®
100% solution dyed Pa6 (40% recycled content)
- Dimensions - m²/box: 25 x 75 cm - 3,75 m²

- Pile weight: 600 g/m²
- Pile thickness: 3,4 mm
- Total thickness: 7,1 mm
- Wear classification: 33 / LC1

- Fire classification: Bfl-s1
- Impact sound reduction: ΔLw = 26 dB
- Sound absorption: 0,15 αw
- GUT-Prodís number: 6A8A980E

Shared Path

BEYOND
FLOORING



853

LRV: 14,89 - L 45,41



958

LRV: 12,34 - L 41,69



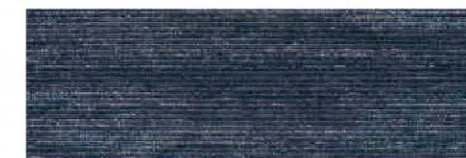
924

LRV: 18,82 - L 50,37



959

LRV: 10,21 - L 38,09



569

LRV: 5,09 - L 26,94



989

LRV: 5,45 - L 27,93

LRV = Light Reflectance Value according to BS 8493, L = according to CIE L*a*b* colour space

Metallic Path

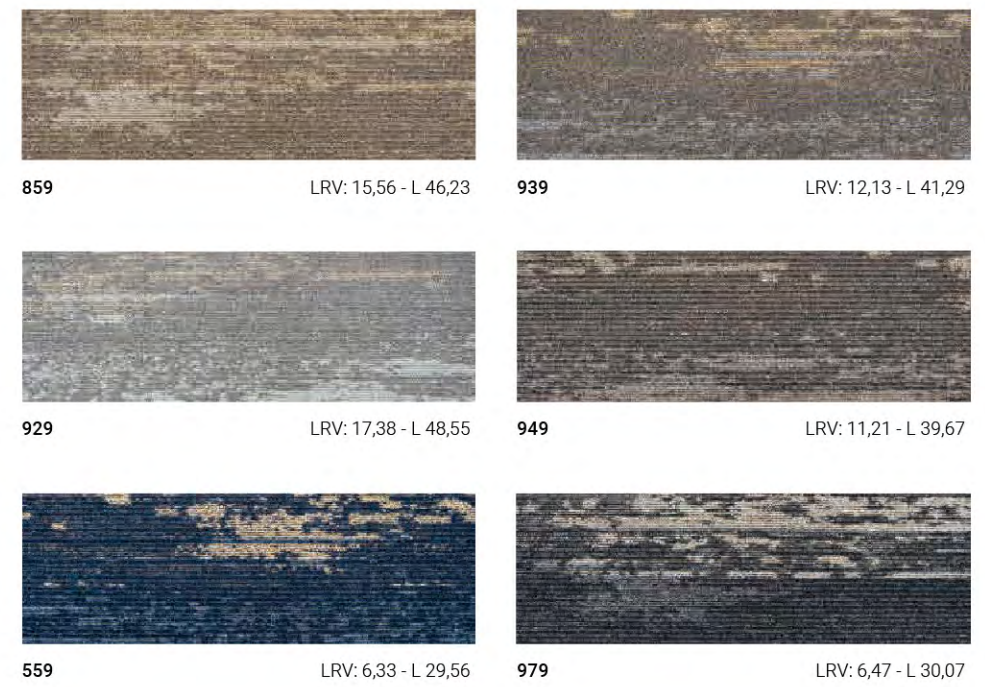
Creative Spark
751
559



Metallic Path

Art Style

- Construction: tufted 1/12" gauge loop
- Backing: EcoFlex™ Statera
- Pile material: ColorStrand® 100% solution dyed Pa6 (40% recycled content)
- Dimensions - m²/box: 25 x 75 cm - 3,75 m²
- Pile weight: 600 g/m²
- Pile thickness: 3,4 mm
- Total thickness: 7,1 mm
- Wear classification: 33 / LC1
- Fire classification: Bfl-s1
- Impact sound reduction: ΔLw = 29 dB
- Sound absorption: 0,15 αw
- GUT-Prodís number: 68365BF5



LRV = Light Reflectance Value according to BS 8493, L = according to CIE L*a*b* colour space

Top-quality yarn

ColorStrand®

ColorStrand® 溶液染色紗線超出了日益複雜項目的預期。這種紗線在商業空間中表現出色，傳遞著永恆的美麗和價值。

Performance 性能

- 工程性能
- 無與倫比的耐光色牢度
- 多種顏色，出色的設計靈活性

Sustainability 可持續發展

- 40% 的可回收成分
- 由 Underwriters Laboratory® 認證的第三方認證



Duracolor

Duracolor 尼龍結合了耐污性和可持續性與永恆的美麗，提高了所有房間和項目的高性能地毯瓷磚的標準。

Performance 性能

由於永久性的內置保護，可以抵抗99%的污漬

Sustainability 可持續發展

- 30% 的可回收成分: 25% pre-consumer 和 5% post-consumer
- 延長產品壽命減少對環境影響

Forever beautiful 永恆的美麗

- 持久的顏色: 對光和大氣毒素具有無與倫比的堅牢度
- 20年的歷史: 莫霍克(Mohawk)最早於 1991年獲得專利



Innovative secondary backing

EcoFlex™ Statera

EcoFlex™ Statera 由 70% 的再生石灰石和改性瀝青組成，是可持續性設計的典範。

Performance 性能

- 在商用地板的市場上
累積了近 40 年的使用和信賴
- 最佳尺寸穩定性
- 靈活的解決方案: 100% 散裝地毯
- 商業地板的最高防焰等級: Bfl-s1

Sustainability 可持續發展

- 按成品重量計 70% pre-consumer 可回收成分
- 有助於 GUT-Prodis 認證



EcoFlex™ NXT

EcoFlex NXT 是一種聚烯烴地毯瓷磚襯底底墊，比同類競爭產品輕達 25% 讓產品更容易安裝，運輸成本更低。
還包含了至少 35% pre-consumer 的回收成分。它的背後是可持續設計的典範。

Performance 性能

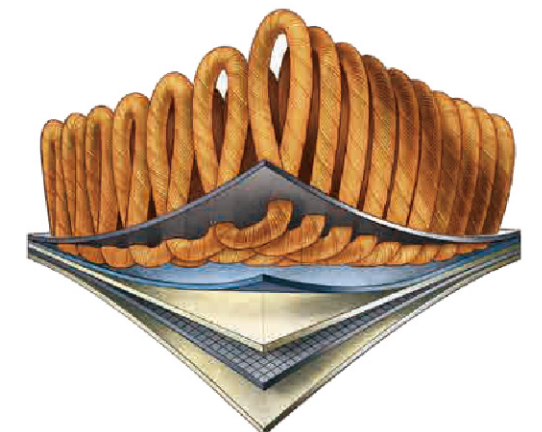
- 擁有最好的尺寸穩定性
- 防止濕氣損壞清潔和溢出
- 高級簇絨裝訂: 抗邊緣脫落
- 濕度條件不超過 99% rH.
- 比普通標準襯底輕達 40%

Sustainability 可持續發展

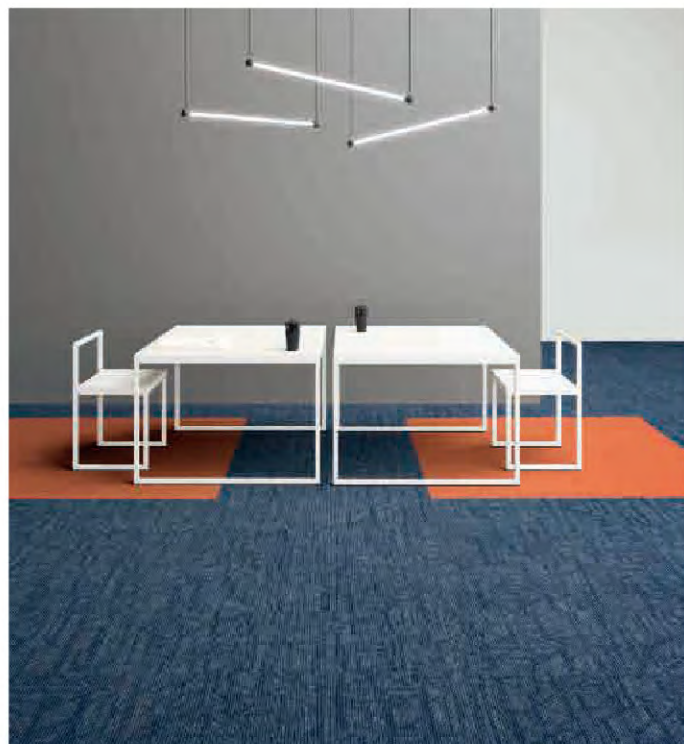
- 沒有塑化劑或 PVC.
- 最低 35% pre-consumer 回收成分

Certification 認證

- 金級認證，符合 NSF/ANSI 140
- 通過 CRI Green Label Plus 認證



Get inspired



Creative Spark 927

LRV = Light Reflectance Value according to BS 8493
L = according to CIE L*a*b* colour space



Shared Path 569 - 853

LRV = Light Reflectance Value according to BS 8493
L = according to CIE L*a*b* colour space



Metallic Path 979
Shared Path 958 - 959

LRV = Light Reflectance Value according to BS 8493
L = according to CIE L*a*b* colour space



Metallic Path 939
Creative Spark 927

LRV = Light Reflectance Value according to BS 8493
L = according to CIE L*a*b* colour space

Get inspired



Shared Path 924 - 989

LRV = Light Reflectance Value according to BS 8493
L = according to CIE L*a*b* colour space



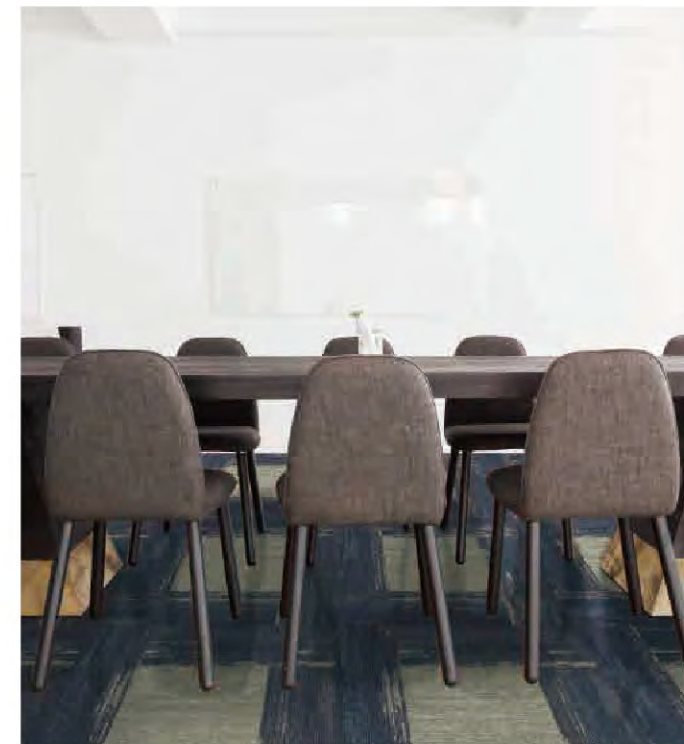
Shared Path 569 - 853

LRV = Light Reflectance Value according to BS 8493
L = according to CIE L*a*b* colour space



Metallic Path 979
Shared Path 958 - 959

LRV = Light Reflectance Value according to BS 8493
L = according to CIE L*a*b* colour space



Metallic Path 559
Academic View 924

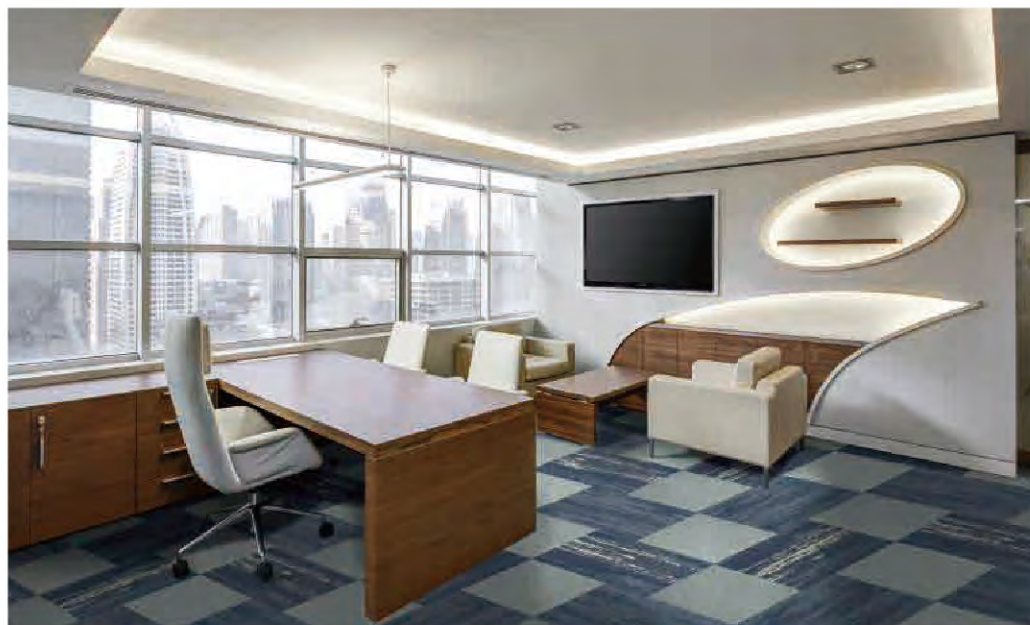
LRV = Light Reflectance Value according to BS 8493
L = according to CIE L*a*b* colour space

Get inspired



Metallic Path 859 - 929 - 949 - 979

LRV = Light Reflectance Value according to BS 8493
L = according to CIE L*a*b* colour space



Metallic Path 559 • Creative Spark 559 • Shared Path 569

LRV = Light Reflectance Value according to BS 8493
L = according to CIE L*a*b* colour space



Future-proof, for you and for the planet

在 IVC 集團，我們真正相信以未來為中心產品。這就是為什麼我們花時間停頓並反省整個戰略和運營影響的原因。但我們也意識到，行動勝於雄辯，因此，這就是我們日復一日提高可持續性行業標準的方式。

Through our certified processes, skilled and inspired people and product portfolio that combines good value and corporate social responsibility, we really make the difference, for you and for the planet

- 通過節約資源和減少浪費
我們將製造和分銷業務對環境的影響降至最低
- 我們的節能地板製造工廠
是同類產品中最薄和最環保的
- 為了將我們的產品提供給您，內陸水道是合乎邏輯的選擇。
- 我們投資於清潔空氣技術和最先進的製造方法
- 我們盡可能使用可回收或再生材料
考慮環保油墨和可回收的PVC
- 我們要求所有供應商負責確保以負責任的方式生產產品
—— 尊重勞動和環境



Technical Specifications

Spécifications techniques - Technische specificaties - Technische Spezifikationen

		Creative Spark
Construction Structure - Structuur - Konstruktion		Tufted 1/10" gauge loop
Pile fibre composition Composition des fibres - Poolmateriaal - Material der Polnutschicht		100% solution dyed nylon
Secondary backing Envers - Rug - Beschichtung		EcoFlex™ Statera (modified bitumen, 70% recycled content)
Total weight Poids total - Totaal gewicht - Gesamtgewicht		± 4100 g/m²
Pile weight Poids du velours - Poolgewicht - Poleinsatzgewicht		± 540 g/m²
Surface pile weight Poids du velours utile - Effectieve poolmassa - Polnutschichtgewicht		± 370 g/m²
Total thickness Epaisseur totale - Totale dikte - Gesamtdicke		± 6,3 mm
Surface pile thickness Hauteur du velours - Poolhoogte - Poldicke		± 3,1 mm
Surface pile density Densité du velours - Pooldichtheid - Polrohdichte		± 0,119 g/cm³
Number of tufts Nombre de boucles - Aantal noppen - Noppenzahl		176.300/ m²
Wear classification Classement d'usage - Gebruiksklasse - Beanspruchungsklasse	EN 1307	33 / LC1
Castor chair suitability Résistance aux chaises à roulettes - Rolstoelgeschiktheid - Stuhlrolleneignung	EN 985	A: intensive use
Fire classification Comportement au feu - Brandgedrag - Brandklasse	EN 13501-1	Bfl-s1
Dimensional stability Stabilité dimensionnelle - Dimensionele stabiliteit - Dimensionsstabilität	EN 986	≤ 0,2%
Colour fastness to light Solidité des couleurs à la lumière - Lichtbestendigheid van de kleuren - Lichtechtheit	EN ISO 105-B02	≥ 7
Rubbing fastness Solidité au frottement - Wrijftechtheid - Reibechtheit	EN ISO 105-X12	≥ 4
Colour fastness to water Solidité à l'eau - Waterechtheid - Wasserechtheit	EN ISO 105-E01	≥ 4
Thermal resistance Résistance thermique - Warmtedoorlaatweerstand - Wärmedurchlasswiderstand	ISO 8302	0,072 m².K/W
Sound absorption Absorption phonique - Geluidsabsorptie - Schallabsorptionsgrad	EN ISO 354	0,15 αw Hz 125 250 500 1000 2000 4000 αs -0,01 0,00 0,06 0,17 0,25 0,34
Impact sound reduction Réduction phonique aux bruits d'impacts - Reductie contactgeluid - Trittschallverbesserungsmaß	EN ISO 10140-3	ΔLw = 32 dB
Permanent antistatic Antistatique permanent - Permanent antistatisch - Permanent antistatisch	ISO 6356	≤ 2 kV
Number of colours Nombre de coloris - Aantal kleuren - Anzahl der Farben		26
Size & Packaging Dimensions & Emballage - Formaat en verpakking - Abmessungen & Verpackung		50 x 50 cm 5 m²/box - 24 boxes/pallet
GUT-Prodis Number Numéro GUT Prodis - Nummer GUT Prodis - GUT-Prodis Nummer		3AA1D4DF
Warranty years Garantie ans - Garantie in jaren - Garantie Jahren		15

Trusted Guide	Academic View	Shared Path	Metallic Path
Tufted 1/12" gauge loop	Tufted 1/12" gauge loop	Tufted 1/12" gauge loop	Tufted 1/12" gauge loop
100% Colorstrand® Premium Nylon (40% recycled content) 100% solution dyed Pa6	100% Colorstrand® Premium Nylon (40% recycled content) 100% solution dyed Pa6	100% Colorstrand® Premium Nylon (40% recycled content) 100% solution dyed Pa6	100% Colorstrand® Premium Nylon (40% recycled content) 100% solution dyed Pa6
EcoFlex™ Statera (modified bitumen, 70% recycled content)	EcoFlex™ Statera (modified bitumen, 70% recycled content)	EcoFlex™ Statera (modified bitumen, 70% recycled content)	EcoFlex™ Statera (modified bitumen, 70% recycled content)
± 4500 g/m²	± 4500 g/m²	± 4500 g/m²	± 4500 g/m²
± 600 g/m²	± 600 g/m²	± 600 g/m²	± 600 g/m²
± 392 g/m²	± 410 g/m²	± 389 g/m²	± 395 g/m²
± 6,5 mm	± 6,6 mm	± 7,1 mm	± 7 mm
± 3,1 mm	± 3,2 mm	± 3,6 mm	± 3,5 mm
± 0,126 g/cm³	± 0,132 g/cm³	± 0,107 g/cm³	± 0,113 g/cm³
224.400/m²	234.600/m²	209.100/m²	214.200/m²
33 / LC1	33 / LC1	33 / LC1	33 / LC1
A: intensive use	A: intensive use	A: intensive use	A: intensive use
Bfl-s1	Bfl-s1	Bfl-s1	Bfl-s1
≤ 0,2%	≤ 0,2%	≤ 0,2%	≤ 0,2%
≥ 7	≥ 7	≥ 7	≥ 7
≥ 4	≥ 4	≥ 4	≥ 4
≥ 4	≥ 4	≥ 4	≥ 4
0,07 m².K/W	0,07 m².K/W	0,077 m².K/W	0,076 m².K/W
0,15 αw	0,20 αw	0,15 αw	0,15 αw
Hz 125 250 500 1000 2000 4000 αs 0,05 0,03 0,03 0,16 0,26 0,34	Hz 125 250 500 1000 2000 4000 αs 0,02 0,03 0,03 0,16 0,26 0,34	Hz 125 250 500 1000 2000 4000 αs 0 0,05 0,05 0,15 0,3 0,3	Hz 125 250 500 1000 2000 4000 αs 0 0 0,05 0,15 0,3 0,35
ΔLw = 25 dB	ΔLw = 25 dB	ΔLw = 26 dB	ΔLw = 29 dB
≤ 2 kV	≤ 2 kV	≤ 2 kV	≤ 2 kV
6	6	6	6
50 x 50 cm 5 m²/box - 24 boxes/pallet	50 x 50 cm 5 m²/box - 24 boxes/pallet	25 x 75 cm 3,75 m²/box - 24 boxes/pallet	25 x 75 cm 3,75 m²/box - 24 boxes/pallet
1F0B31AD	32EF772D	6A8A980E	68365BF5
15	15	15	15



Photographic images are not representative due to variations in colour printing. The representative samples shown are sectional definitions. For full design representation, please visit the website.



CARPET TILES

Mohawk Group

BEYOND
FLOORING

Light reflection values

Creative Spark

Colour nr.	566	574	559	751	927	969	979	989	998	
LRV	L Value Y Value	- 2,41	38,33 5,67	- 13,16	- 20,99	- 19,80	- 12,73	38,33 9,02	- 4,37	- 2,29

Trusted Guide

Colour nr.	569	853	924	958	959	989	
LRV	L Value Y Value	27,91 5,43	46,89 15,95	36,48 9,33	42,84 13,06	38,94 10,64	26,63 4,97

Academic View

Colour nr.	569	853	924	958	959	989	
LRV	L Value Y Value	27,87 5,42	46,84 15,95	50,76 19,10	42,68 12,97	38,43 10,37	28,10 5,51

Shared Path

Colour nr.	569	853	924	958	959	989	
LRV	L Value Y Value	26,94 5,09	45,41 14,89	50,37 18,82	41,69 12,34	38,09 10,21	27,93 5,45

Metallic Path

Colour nr.	559	859	929	939	949	979	
LRV	L Value Y Value	29,56 6,33	46,23 15,56	48,55 17,38	41,29 12,13	39,67 11,21	30,07 6,47

We reserve all rights for technical improvements.



The QuickShip program provides you instant access to a large part of our collections with significantly reduced lead times, saving you valuable time in the design and delivery process.