



空間地面材料專業整合



百僱企業股份有限公司
ForceOne Enterprise Co., Ltd.

新北市林口區文化一路一段238號1樓
T. (02) 2602-3208 | F. (02) 2602-7326
E. info@force1.com.tw
www.force1.com.tw

**Flooring
solutions
for
every interior**



空間地面材料專業整合

ABOUT

 ForceOne



高雄市前鎮區 承億酒店

Force One Commercial
商業開發部

匯集建築法規、空間規劃、地面工程等專業，為各式空間提供地面整合，以及完善的解決方案。

專地專用

憑藉經手多項公共設施與商辦空間工程的專業經驗，除了地坪規劃整合服務，更能評估地況、設計風格、業主需求，進一步為空間提供最適合的地面材料選擇。

媒合地材

不同於傳統建材業，ForceOne Commercial 掌握豐富的地材資源，深入媒合地材與設計風格，並兼具實用性與空間機能，提供最多樣化的異材質搭配彙整方案。

正確施工

我們重視工程的每一道細節，深入了解地況與空間結構，熟知不同工法的優劣差異，採取正確、完整的工序才能保障施工順利以及使用上的後顧無憂，以恰當的工時完成每一項工程。

EXPERTISE

最新的全球空間趨勢與地面材料 | 承襲傳統，更精益求精

作為領航者，我們時時刻刻與全球趨勢緊密連結，涵蓋地面材料、收邊配件、介面接合以及室內設計風格等最新資訊。

熟知建築技術相關法規 | 空間的舒適與安全，需要專業領域不斷與時俱進

寧靜宅法規的正式上路，樓地板衝擊音帶來的影響不容忽視，我們能媒合隔音降噪地材，打造符合相關法規與國家標準(CNS)的優質環境。

辨圖解圖分析規範

最為建築與室內設計專業相關的有力工具，我們同時具備AutoCAD製圖能力，用示意結合溝通說明，幫助業主快速理解，增進合作效益。

各國產品優勢解說

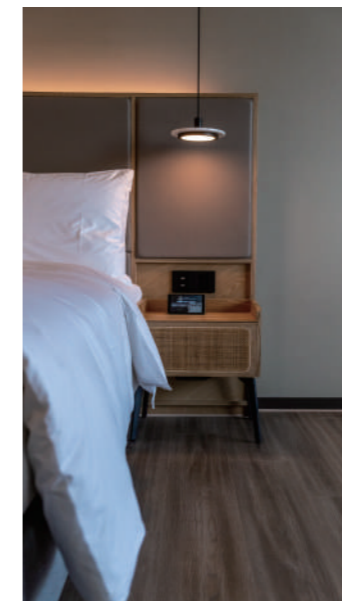
根據相關法規整合綠建材資源，提供永續健康空間的解決方案，協助媒合國內外綠建築認證(LEED、BREEAM、CASBEE...等)

多樣化的施工方式

針對不同的用料與地況，在傳統工法的基礎上不斷改良，除了確保使用上的穩定與安全無虞，我們注重細節並堅持正確的工時、工序、工法原則，提供最合適的施工方式。

特殊場域地面工程整合

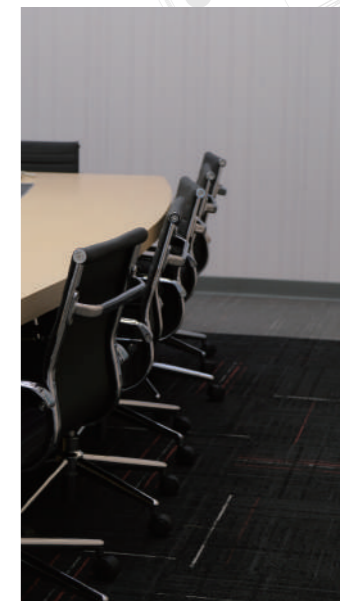
整合導電地面、放射性物質操作室地面、防腐蝕及防滑地面、機房雙層結構地面、體育館地面等根據機能需使用特殊材質的場域工程。



高雄市前鎮區 承億酒店



新北市板橋區 台電大樓



新北市板橋區 台電大樓

除了旗下代理的高品質地面材料,結合歷年累積的專案實績與專業領域

ForceOne Commercial能為您帶來突破性的空間地面整合服務

根據法規與需求

ForceOne Commercial 具備整合特殊地面工程的專業能力,提供安全並符合機能的解決方案



BUSINESS



台中市神岡區 台中麗晨企業廠



新北市板橋區 台電大樓



新竹縣竹北市 躲貓貓寵物生活館



高雄市前鎮區 飛島茶軒

公共工程標案 |

台電輸變電工程處、台北大眾捷運新莊機廠、桃園機場捷運工程、高雄市內惟藝術中心、高雄市立圖書館總館、台北市立木柵動物園教育館區、中油煉油廠、台電新民大樓、台南大學應數系、台灣藝術大學、屏東縣政府勞青處、高雄內惟藝術中心、高雄科技大學國際視聽室

專業特殊工程 |

德州儀器製程工廠、中油VOG實驗室、無菌、無塵、導電、抗強酸鹼、運動場等特殊機能場域

國際連鎖飯店 |

承億酒店、天璽商務飯店、假日酒店

商業空間 |

何嘉仁國際教育中心、台灣美創股份有限公司、寰宇教育中心北投分佈、台灣華可貴股份有限公司YKK、TAIWAN DUTY FREE 采盟免稅店、Grand Seiko 101專櫃、TOD'S 新光三越A4專櫃、微星科技股份有限公司三廠、遊戲橘子內湖企業集團總部

住宅空間 |

蝶水映



The Collection

#01
F1

#02
FINEO

#03
LOOM+

#04
IVC

#05
RAGNO

BEYOND
FLOORING



FINEO LVT

UNIQUE SERIES | 피네오 유니크 타일
FINEO LVT UNIQUE DESIGN COLLECTION



DEFINE NEO SPACE
FINEO LVT **UNIQUE** SERIES

Unique provides you with the best commercial space with durable and healthy benefits.

Trustworthy Partner
yousung C&F

FINEO UNIQUE FEATURES

LUXURY VINYL TILE **FINEO**

Design beyond the Nature

FINEO directly imports exceptional-quality natural materials from worldwide. Every design process is directly addressed, and the beauty of nature is expressed to the finest level with the latest design facilities and premium printing technology. FINEO's much longer and wider designs allow for more natural and luxurious spaces by minimizing pattern repeats.

자연을 뛰어넘는 디자인.

FINEO는 전 세계의 최고급 자연소재를 직접 수입하며, 모든 디자인 과정을 설계하고, 최신 설비와 프리미엄 인쇄 공정을 통해 자연의 아름다움을 뛰어넘는 피네오 데코타일만의 독창적인 디자인을 구현합니다. FINEO는 훨씬 길고 넓은 패턴의 단위로 인해 패턴 반복을 최소화하여 보다 자연스럽고, 고급스러운 공간을 연출할 수 있습니다.

Supreme Guard [Option]

Ceramic bead / Aluminum oxide coating provides enhanced scratch resistance. It minimizes surface damage like scratches and dents caused by heavy traffic commercial conditions.

세라믹 비드 코팅 [옵션]

세라믹 비드/알루미늄 코팅 기술은 보행량이 많은 상업용 공간에서 자주 발생하는 긁힘이나 찍힘과 같은 표면 손상을 최소화합니다.

Pet-safe

FINEO's deep and clear embossed surface prevents pets from slipping on & getting injured. FINEO's double PU coating minimizes pet scratches.

반려동물 안전 보장

FINEO의 깊고 선명한 엠보스 표면은 소중한 반려동물의 미끄러짐, 부상을 방지합니다. FINEO 이중 PU 코팅으로 반려동물로 인한 제품표면의 스크래치를 최소화합니다.

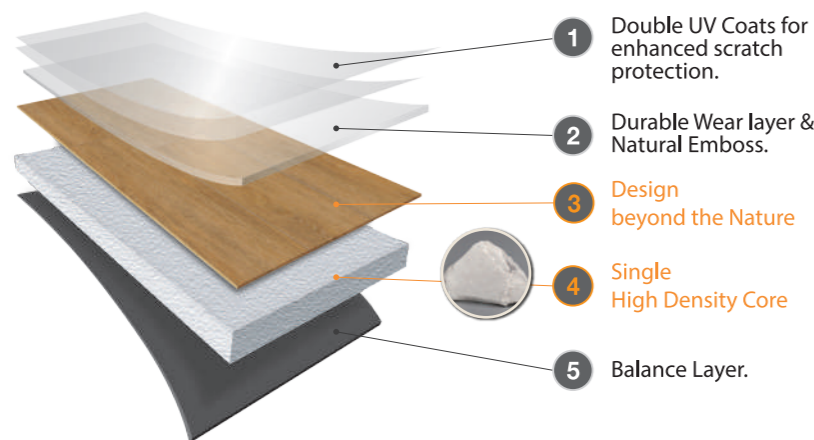
Eco Plus +

FINEO LVT is phthalate-free HPD & EPD certified flooring, made from 100% virgin materials. FINEO's manufacturing process is designed to be fully recyclable, automatic and eco-friendly to reduce its carbon footprint, following Yousung c&f's strong environment & sustainability policy.

친환경 요소

피네오 데코타일은 100% 신재인 친환경 원재료를 사용하며, 환경표지 인증과 저탄소 인증으로 검증된 프탈레이트가 없는 제품입니다. 유성씨엔에프의 강력한 지속가능성 환경정책에 따라 생산공정의 전과정을 자동화하여 탄소배출량을 줄이고 재활용이 가능한 친환경 제품을 공급합니다.

UNIQUE Structure



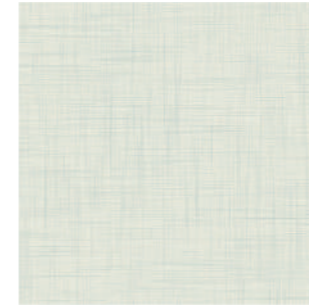
UNIQUE Size

Type	Size(mm)	Thickness	pcs/box	m ² /box
Square	18"X18"	3.0 mm	15	3.14m ²
		5.0 mm	9	1.88m ²
	600mmX600mm	3.0 mm	9	3.24m ²
		5.0 mm	6	2.16m ²
	18"X36"	3.0 mm	8	3.24m ²
		5.0 mm	5	2.09m ²
Wood	6"X48"	3.0 mm	16	2.97m ²
		5.0 mm	10	1.86m ²
	7"X48"	3.0 mm	15	3.25m ²
		5.0 mm	9	1.95m ²
	180mmX920mm	3.0 mm	20	3.31m ²
		5.0 mm	12	1.99m ²
House	100mmX920mm	3.0 mm	36	3.31m ²
	6"X36"	3.0 mm	24	3.34m ²

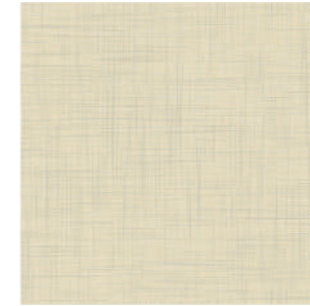
FINEO LUXURY VINYL TILE

UNIQUE Coordination

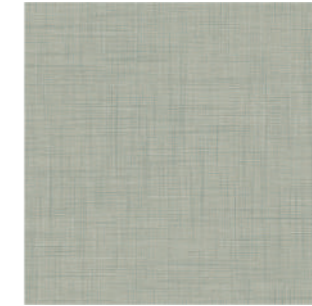
SIZE: 600mm X 600mm X 3.0(T), PACKAGE: 9pcs/box (3.24m²)
18" X 36" X 3.0(T), PACKAGE: 8pcs/box (3.34m²) available



FSU 6311
白川



FSU 6312
韶光



FSU 6313
時雨



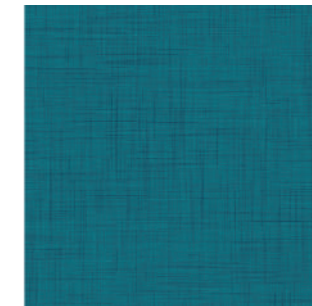
FSU 6314
遠山



FSU 6315
凌霄



FSU 6316
丹楓



FSU 6317
靜海



FSU 6318
寂淵

UNIQUE SQUARE

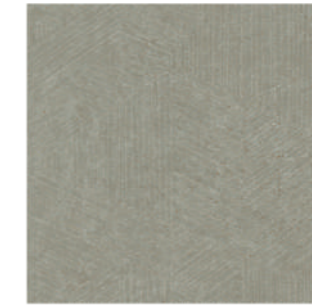
SIZE: 600mm(W) X 600mm(L) X 3.0(T)
PACKAGE: 9pcs/box (3.24m²)



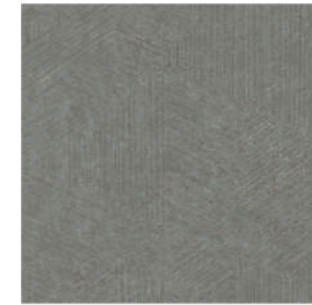
FSU 6501
如煙



FSU 6502
雲暉



FSU 6503
岩嶺



FSU 6504
玄清



YSF6021
月珀



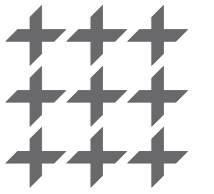
YSF6022
冷霧



YSF6023
影灰



YSF6024
滄溼



WOVEN
DESIGN
FLOORING

 **LOOM⁺**
WOVEN DESIGN FLOORING

Designed and Manufactured by NOX Corporation

NOX Corp. | KOREA
Shinho Factory
Shinho 2nd Factory, Yedang
Enbo Factory
Godeok Factory
Bongsan Factory
Deoksan Factory
Choongnam, Korea

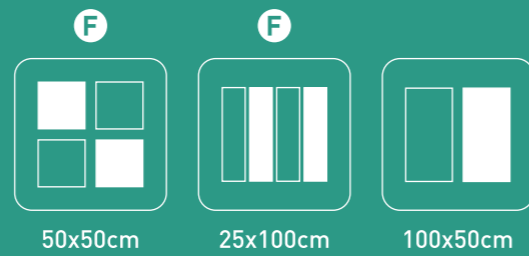
www.loom.com.tw

Reinvent Spaces with

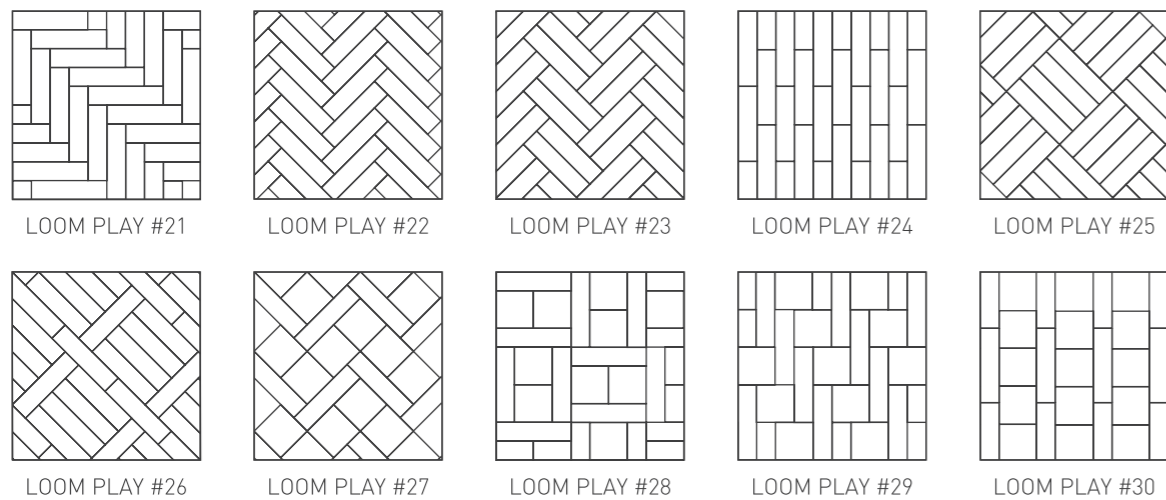
LOOM⁺ PLAY!

您可以自由地通過混合和匹配 3 種尺寸，
變化的不同圖案和顏色來創建自己的設計

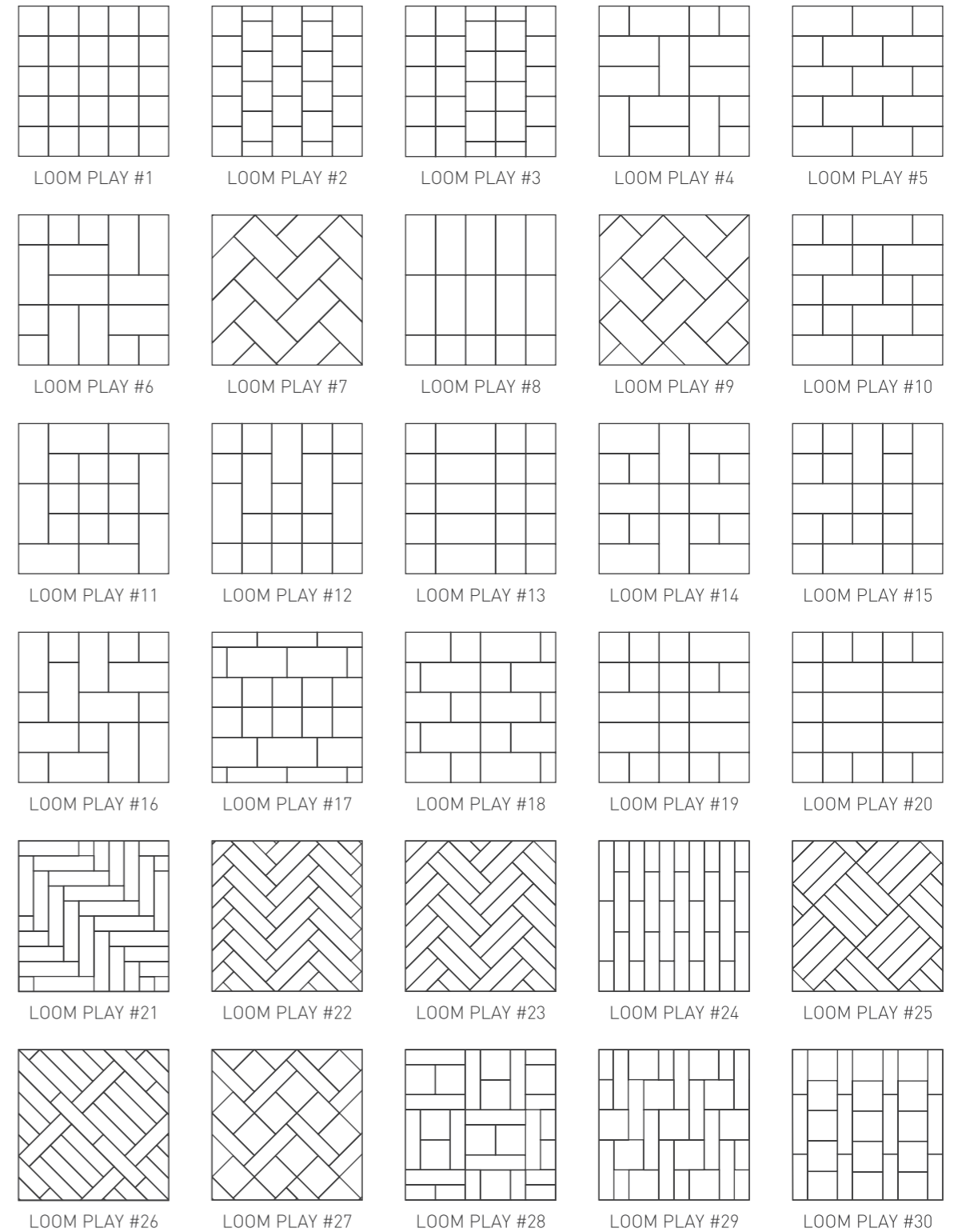
All work together in any combination, giving you
the freedom to create your own design by mixing
& matching different patterns and colors in
3 size variations.



NEW LOOM⁺ PLAY!



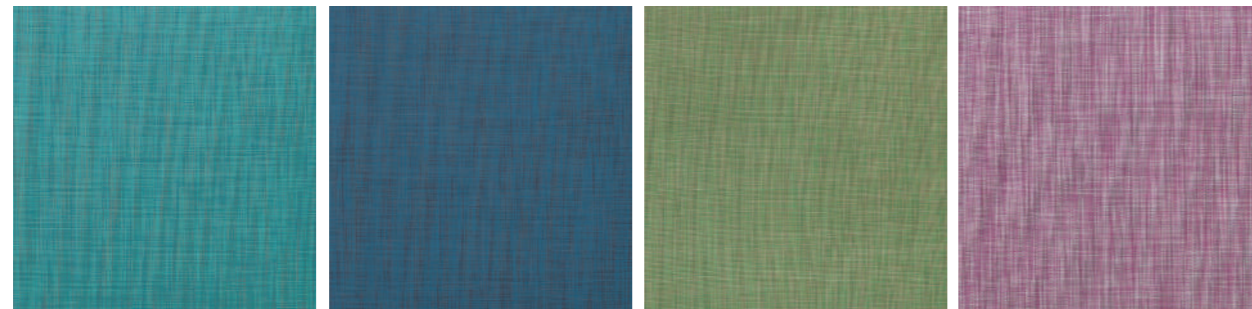
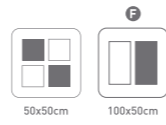
安裝概念指南 INSTALLATION CONCEPT GUIDE



Colour finder

KNIT

Cozy & Elegant

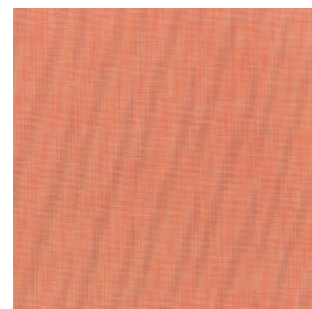


FT-2202

FT-2203

FT-2204

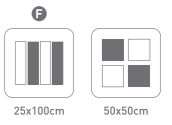
FT-2207



FT-2211

POP

Vibrant & Dazzling



FQ-2701

FQ-2702

FQ-2703

FQ-2704

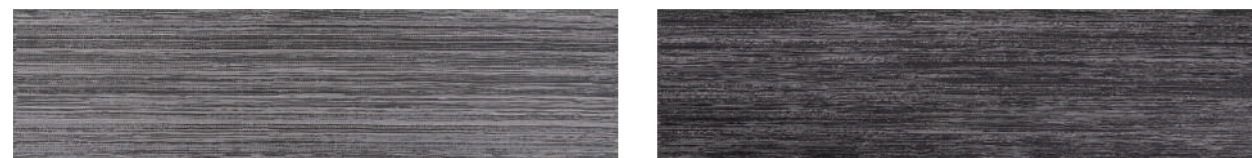
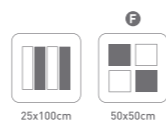


FQ-2705

FQ-2706

OMBRE

Inspirational & Unique



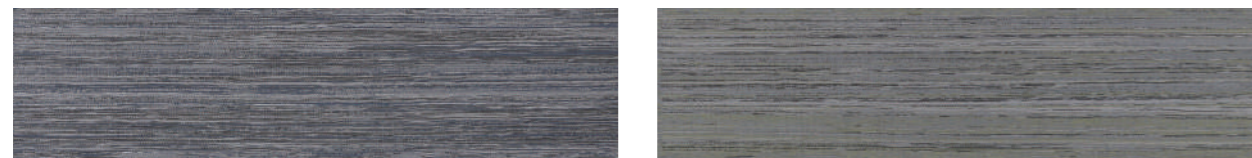
FQ-2401

FQ-2402



FQ-2403

FQ-2404

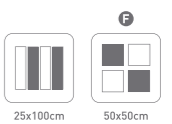


FQ-2405

FQ-2406

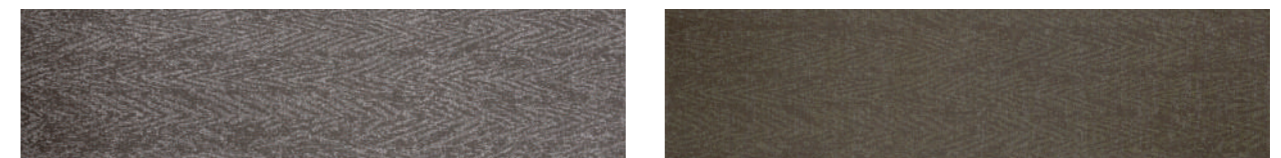
HERRINGBONE

Classic & Cozy



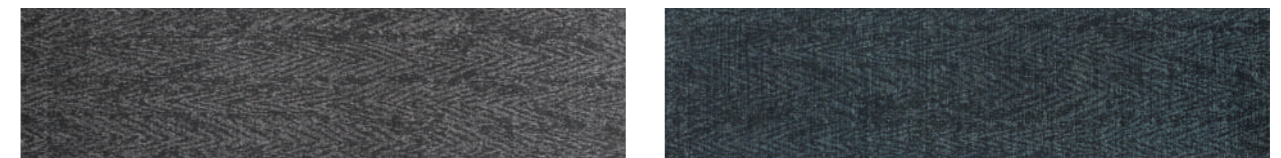
FQ-2501

FQ-2502



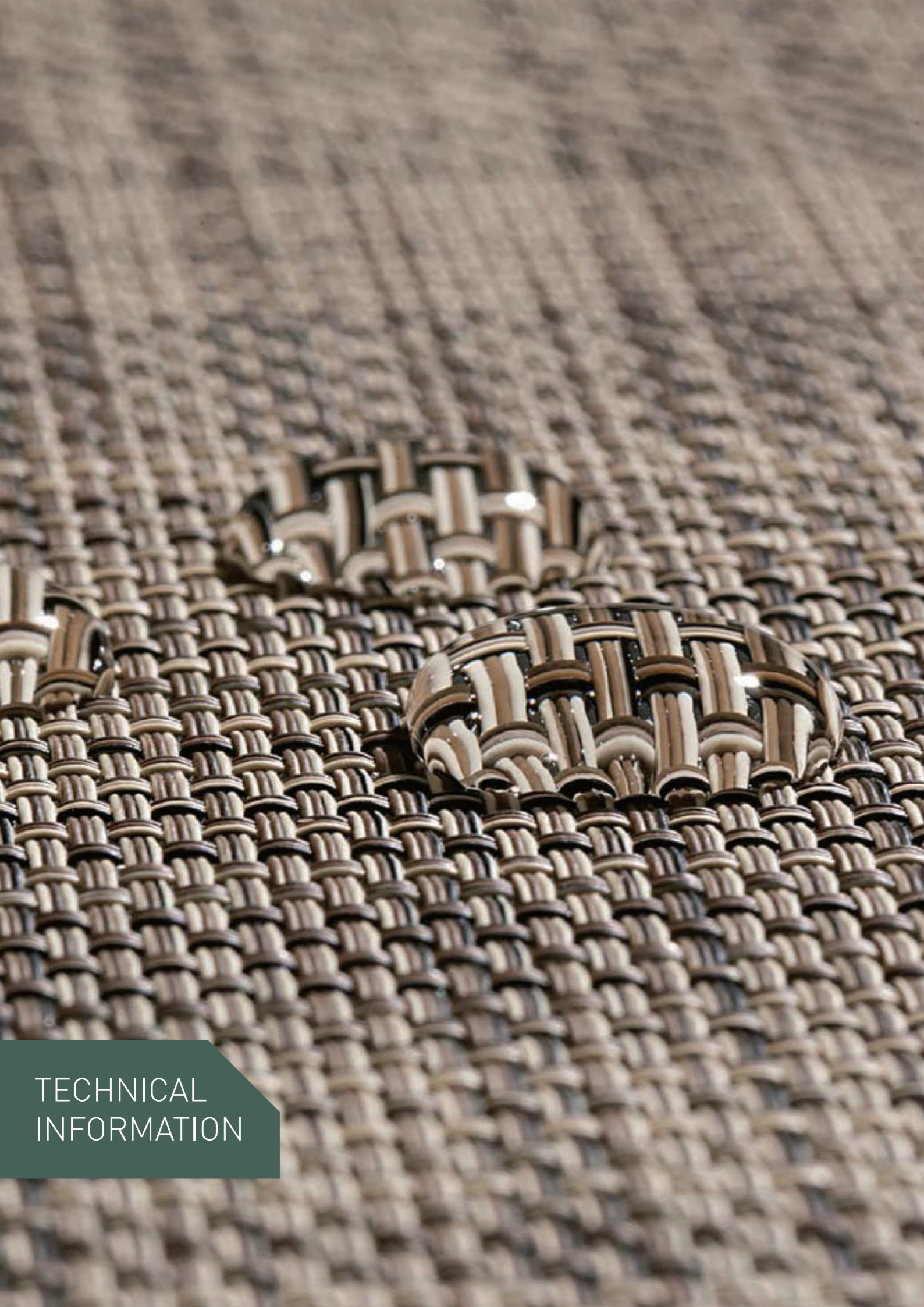
FQ-2503

FQ-2504



FQ-2505

FQ-2506



TECHNICAL INFORMATION

Technical Information



1. Size & Packing

Size(mm)	Thickness(mm)	Pcs/Box	m ² /Box	Kg/m ²
500x500	3	16 pcs/box	4m ²	5.0
	5	10 pcs/box	2.5m ²	8.2
250x1000	3	16 pcs/box	4m ²	5.0
	5	10 pcs/box	2.5m ²	8.2
1000x500	3	8 pcs/box	4m ²	5.0
	5	5 pcs/box	2.5m ²	8.2

2. Technical Guide

Characteristics	Standard	Unit	Typical Values	Results
Pollution Resistance	CNS 8907	%	0	PASS
Chemical Resistance	CNS 4447	%	Not Detected	PASS
Plasticizer	CNS 15138-1	%	Not Detected	PASS
Coefficient of Thermal Expansion	CNS 8907	°C ⁻¹	H -9.37x10 ⁻⁴ , W -4.93x10 ⁻⁶	PASS
Heating scale change rate	CNS 8907	%	H -0.07, W -0.05	PASS
Water absorption change rate	CNS 8907	%	H +0.04, W +0.03	PASS
VOC Emission	CNS 8907	mg/m ²	0.0013	PASS
Slip Resistance	CNS 8907	g/m ²	PASS	PASS
Color Fastness Test	CNS 8907	grade	4-5	PASS
Dentness	CNS 8907	mm	PASS	PASS
Residuary Dentness	CNS 8907	mm	PASS	PASS
Reverse Warp Test	CNS 8907	mm	0	PASS
Scale	CNS 8907	mm	PASS	PASS
Right Angle Degree	CNS 8907	mm	0	PASS
Softness	CNS 8907		No Cracks	PASS
Peeling strength between layers	CNS 8907	mm	PASS	PASS
Density	CNS 8907	g/cm ³	1.693	PASS

3. Performance Tests - CNS Standard (經濟部標準檢驗局國家標準)

Article	Method	Unit	MDL	Typical Values	Results
Formaldehyde Emission	CNS 2215	mg/L	> 0.05	No Detected	PASS
Wear Resistance	CNS 8907	mg/1000 cycle		29	PASS

本產品均通過中華民國標檢局 CNS8907 檢測通過

4. Anti-flaming - According to CNS 8907 (防燬基金會測試認證通過)

Article	Method	Unit	Requirements	Typical Values	Results
Flames heating time	CNS 8907	sec	30	Level1	PASS
Remaining flame time	CNS 8907	sec	<20	0.0	PASS
Length of carbonization	CNS 8907	mm	<100	32	PASS

5. Antimicrobial Activity of Plastics-JIS Standard (日本工業標準)

抗菌測試依 JIS Z 2801 : 2010 / AMD 1 : 2012 方法檢測-克雷白氏肺炎菌測試通過

6. Caution

Condition in at least 19°C or the normal temperature of the room where the product is to be laid, for at least 48 hours before installing. Cartons must be stacked less than 5 high and tiles removed 30 minutes before use. The site conditions must be maintained during installation and for at least 48 hours after completion. NOX Corporation will not accept claims where these instructions have not been followed.

Futures:

7. Certificate



Visit www.loom.com.tw for the detailed installation / maintenance guides and technical information.



BEYOND
FLOORING



BEYOND FLOORING

BEYOND
FLOORING

在漸漸分裂的世界中，藝術將人們重新聚集在一起。藝術作為一種通用的語言和改革的推動者，藝術介入以激發、治愈和解脫。

IVC 運用三種系列產品將藝術的力量傳遞：Art Intervention, Art Exposure 和 Art Style

IVC 是 IVC 集團的商業部門，致力於為公司和辦公室、零售、酒店和休閒、住家、教育和醫療保健等項目創建獨特的地板。成立於 1997 年，是歐洲領先的地毯磚、高級乙烯基瓷磚 (LVT) 和乙烯基板材的製造商。在比利時、盧森堡、美國和俄羅斯擁有 1,600 名員工和 10 個生產單位，每年生產的地板面積超過 1.8 億平方米。

自 2015 年起，IVC 集團成為世界上所有地板產品的市場領導者—莫霍克工業公司的一部分，其擁有 130 多年的傳統工藝技術。這擴大了 IVC 的全球影響力，無論您身在何處，我們可以為您提供產品服務。

Art Exposure

Trusted Guide

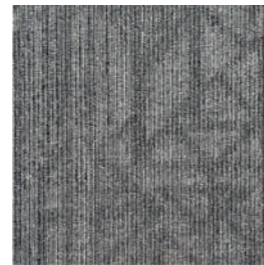
- Construction: tufted 1/12" gauge loop
- Backing: EcoFlex™ Statera
- Pile material: ColorStrand® 100% solution dyed Pa6 (40% recycled content)
- Dimensions - m²/box: 50 x 50 cm - 5 m²
- Pile weight: 600 g/m²
- Pile thickness: 3,3 mm
- Total thickness: 7 mm
- Wear classification: 33 / LC1
- Fire classification: Bfl-s1
- Impact sound reduction: ΔLw = 25 dB
- Sound absorption: 0,15 aw
- GUT-Prodís number: 1F0B31AD



958 LRV: 13,06 - L 42,84



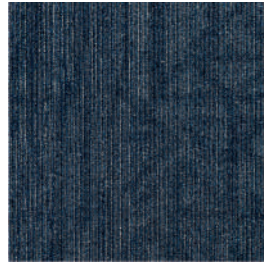
853 LRV: 15,95 - L 46,89



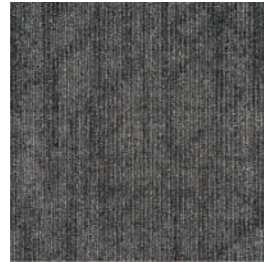
959 LRV: 10,64 - L 38,94



924 LRV: 9,33 - L 36,48



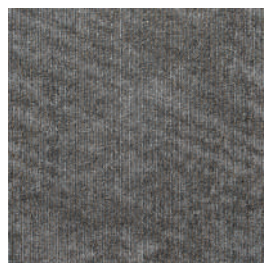
569 LRV: 5,43 - L 27,91



989 LRV: 5,55 - L 28,24

Academic View

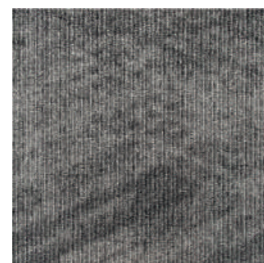
- Construction: tufted 1/12" gauge loop
- Backing: EcoFlex™ Statera
- Pile material: ColorStrand® 100% solution dyed Pa6 (40% recycled content)
- Dimensions - m²/box: 50 x 50 cm - 5 m²
- Pile weight: 600 g/m²
- Pile thickness: 3,4 mm
- Total thickness: 7 mm
- Wear classification: 33 / LC1
- Fire classification: Bfl-s1
- Impact sound reduction: ΔLw = 25 dB
- Sound absorption: 0,20 aw
- GUT-Prodís number: 32EF772D



958 LRV: 12,97 - L 42,68



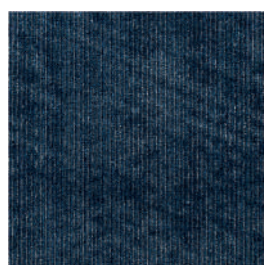
853 LRV: 15,95 - L 46,84



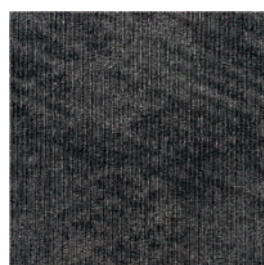
959 LRV: 10,37 - L 38,43



924 LRV: 19,10 - L 50,76



569 LRV: 5,42 - L 27,87



989 LRV: 5,51 - L 28,10

Technical Specifications

Spécifications techniques - Technische specificaties - Technische Spezifikationen

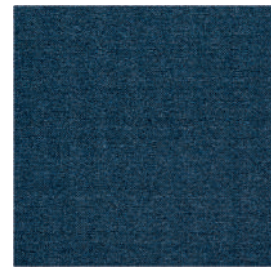
	Academic View	Trusted Guide
Construction Structure - Structuur - Konstruktion	Tufted 1/12" gauge loop	Tufted 1/12" gauge loop
Pile fibre composition composition des fibres - Poolmateriaal - Material der Polnutschicht	100% Colorstrand® Premium Nylon (40% recycled content) 100% solution dyed Pa6	100% Colorstrand® Premium Nylon (40% recycled content) 100% solution dyed Pa6
Secondary backing Envers - Rug - Beschichtung	EcoFlex™ Statera (modified bitumen, 70% recycled content)	EcoFlex™ Statera (modified bitumen, 70% recycled content)
Total weight Poids total - Totaal gewicht - Gesamtgewicht	± 4500 g/m ²	± 4500 g/m ²
Pile weight Poids du velours - Poolgewicht - Poleinsatzgewicht	± 600 g/m ²	± 600 g/m ²
Surface pile weight Poids du velours utile - Effectieve poolmassa - Polnutschichtgewicht	± 410 g/m ²	± 392 g/m ²
Total thickness Epaisseur totale - Totale dikte - Gesamtdicke	± 6,6 mm	± 6,5 mm
Surface pile thickness Hauteur du velours - Poolhoogte - Poldicke	± 3,2 mm	± 3,1 mm
Surface pile density Densité du velours - Pooldichtheid - Polrohdichte	± 0,132 g/cm ³	± 0,126 g/cm ³
Number of tufts Nombre de boucles - Aantal noppen - Noppenzahl	234.600/m ²	224.400/m ²
Wear classification Classement d'usage - Gebruiksklasse - Beanspruchungsklasse	EN 1307 33 / LC2	33 / LC1
Castor chair suitability Résistance aux chaises à roulettes - Rolstoelgeschiktheid - Stuhlleneignung	EN 985 A: intensive use	A: intensive use
Fire classification Comportement au feu - Brandgedrag - Brandklasse	EN 13501-1 Bfl-s1	Bfl-s1
Dimensional stability Stabilité dimensionnelle - Dimensionele stabiliteit - Dimensionsstabilität	EN 986 ≤ 0,2%	≤ 0,2%
Colour fastness to light Solidité des couleurs à la lumière - Lichtbestendigheid van de kleuren - Lichtechtheit	EN ISO 105-B02 ≥ 7	≥ 7
Rubbing fastness Solidité au frottement - Wrijftechtheid - Reibechtheit	EN ISO 105-X12 ≥ 4	≥ 4
Colour fastness to water Solidité à l'eau - Waterechtheid - Wasserechtheit	EN ISO 105-E01 ≥ 4	≥ 4
Thermal resistance Résistance thermique - Warmtedoorlaatweerstand - Wärmedurchlasswiderstand	ISO 8302 0,07 m ² .K/W	0,07 m ² .K/W
Sound absorption Absorption phonique - Geluidsabsorptie - Schallabsorptionsgrad	EN ISO 354 0,20 aw Hz 125 250 500 1000 2000 4000 as 0,02 0,03 0,03 0,16 0,26 0,34	0,15 aw Hz 125 250 500 1000 2000 4000 as 0,05 0,03 0,03 0,16 0,26 0,34
Impact sound reduction Réduction phonique aux bruits d'impacts - Reductie contactgeluid - Trittschallverbesserungsmaß	EN ISO 10140-3 ΔLw = 25 dB	ΔLw = 25 dB
Permanent antistatic Antistatique permanent - Permanent antistatisch - Permanent antistatisch	ISO 6356 ≤ 2 kV	≤ 2 kV
Number of colours Nombre de coloris - Aantal kleuren - Anzahl der Farben	6	6
Size & Packaging Dimensions & Emballage - Formaat en verpakking - Abmessungen & Verpackung	50 x 50 cm 5 m ² /box - 24 boxes/pallet	50 x 50 cm 5 m ² /box - 24 boxes/pallet
GUT-Prodís Number Numéro GUT Prodís - Nummer GUT Prodís - GUT-Prodís Nummer	32EF772D	1F0B31AD
Warranty years Garantie ans - Garantie in jaren - Garantie Jahren	15	15



Art Exposure

Creative Spark

- Construction: tufted 1/10" gauge loop
- Backing: EcoFlex™ Statera
- Pile material: ColorStrand®
100% solution dyed Pa6 (40% recycled content)
- Dimensions - m²/box: 50 x 50 cm - 5 m²
- Pile weight: 540 g/m²
- Pile thickness: 3,1 mm
- Total thickness: 6,3 mm
- Wear classification: 33 / LC1
- Fire classification: Bfl-s1
- Impact sound reduction: ΔLw = 32 dB
- Sound absorption: 0,15 αw
- GUT-Prodís number: 3AA1D4DF



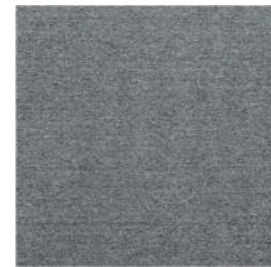
574 LRV: 5,67 - L 38,33



559 LRV: 13,16



751 LRV: 20,99



927 LRV: 19,80



969 LRV: 12,73



979 LRV: 9,02 - L 38,33



989 LRV: 4,37



998 LRV: 2,29



566 LRV: 2,41

Technical Specifications

Spécifications techniques - Technische specificaties - Technische Spezifikationen

		Creative Spark
Construction Structure - Structuur - Konstruktion		Tufted 1/10" gauge loop
Pile fibre composition composition des fibres - Poolmateriaal - Material der Polnutschicht		100% solution dyed nylon
Secondary backing Envers - Rug - Beschichtung		EcoFlex™ Statera (modified bitumen, 70% recycled content)
Total weight Poids total - Totaal gewicht - Gesamtgewicht		± 4100 g/m ²
Pile weight Poids du velours - Poolgewicht - Poleinsatzgewicht		± 540 g/m ²
Surface pile weight Poids du velours utile - Effectieve poolmassa - Polnutschichtgewicht		± 370 g/m ²
Total thickness Epaisseur totale - Totale dikte - Gesamtdicke		± 6,3 mm
Surface pile thickness Hauteur du velours - Poolhoogte - Poldicke		± 3,1 mm
Surface pile density Densité du velours - Pooldichtheid - Polrohndichte		± 0,119 g/cm ³
Number of tufts Nombre de boucles - Aantal noppen - Noppenzahl		176.300/m ²
Wear classification Classement d'usage - Gebruiksklasse - Beanspruchungsklasse	EN 1307	33 / LC1
Castor chair suitability Résistance aux chaises à roulettes - Rolstoelgeschiktheid - Stuhlrolleneignung	EN 985	A: intensive use
Fire classification Comportement au feu - Brandgedrag - Brandklasse	EN 13501-1	Bfl-s1
Dimensional stability Stabilité dimensionnelle - Dimensionele stabiliteit - Dimensionsstabilität	EN 986	≤ 0,2%
Colour fastness to light Solidité des couleurs à la lumière - Lichtbestendigheid van de kleuren - Lichtechtheit	EN ISO 105-B02	≥ 7
Rubbing fastness Solidité au frottement - Wrijftechtheid - Reibechtheit	EN ISO 105-X12	≥ 4
Colour fastness to water Solidité à l'eau - Waterechtheid - Wasserechtheit	EN ISO 105-E01	≥ 4
Thermal resistance Résistance thermique - Warmtedoorlaatweerstand - Wärmedurchlasswiderstand	ISO 8302	0,072 m ² .K/W
Sound absorption Absorption phonique - Geluidsabsorptie - Schallabsorptionsgrad	EN ISO 354	0,15 αw Hz 125 250 500 1000 2000 4000 αs -0,01 0,00 0,06 0,17 0,25 0,34
Impact sound reduction Réduction phonique aux bruits d'impacts - Reductie contactgeluid - Trittschallverbesserungsmaß	EN ISO 10140-3	ΔLw = 32 dB
Permanent antistatic Antistatique permanent - Permanent antistatisch - Permanent antistatisch	ISO 6356	≤ 2 kV
Number of colours Nombre de coloris - Aantal kleuren - Anzahl der Farben		26
Size & Packaging Dimensions & Emballage - Formaat en verpakking - Abmessungen & Verpackung		50 x 50 cm 5 m ² /box - 24 boxes/pallet
GUT-Prodís Number Numéro GUT Prodís - Nummer GUT Prodís - GUT-Prodís Nummer		3AA1D4DF
Warranty years Garantie ans - Garantie in jaren - Garantie Jahren		15



Art Exposure

Shared Path

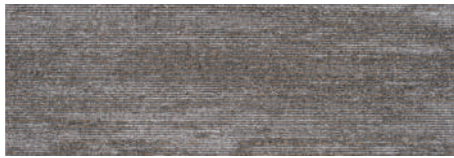
- Construction: tufted 1/12" gauge loop
- Backing: EcoFlex™ Statera
- Pile material: ColorStrand® 100% solution dyed Pa6 (40% recycled content)
- Dimensions - m²/box: 25 x 75 cm - 3,75 m²

- Pile weight: 600 g/m²
- Pile thickness: 3,4 mm
- Total thickness: 7,1 mm
- Wear classification: 33 / LC1

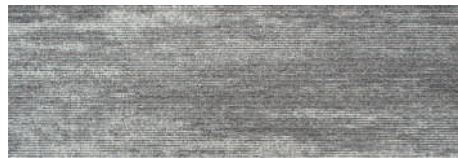
- Fire classification: Bfl-s1
- Impact sound reduction: ΔLw = 26 dB
- Sound absorption: 0,15 aw
- GUT-Prodís number: 6A8A980E



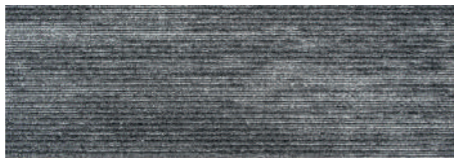
853 LRV: 14,89 - L 45,41



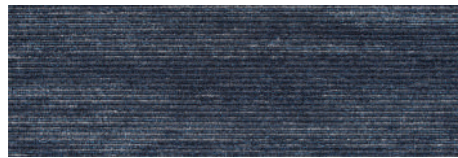
958 LRV: 12,34 - L 41,69



924 LRV: 18,82 - L 50,37



959 LRV: 10,21 - L 38,09



569 LRV: 5,09 - L 26,94



989 LRV: 5,45 - L 27,93

Metallic Path

- Construction: tufted 1/12" gauge loop
- Backing: EcoFlex™ Statera
- Pile material: ColorStrand® 100% solution dyed Pa6 (40% recycled content)
- Dimensions - m²/box: 25 x 75 cm - 3,75 m²

- Pile weight: 600 g/m²
- Pile thickness: 3,4 mm
- Total thickness: 7,1 mm
- Wear classification: 33 / LC1

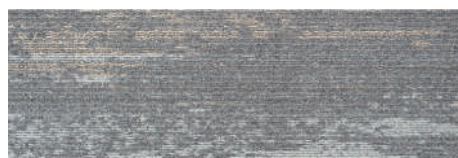
- Fire classification: Bfl-s1
- Impact sound reduction: ΔLw = 29 dB
- Sound absorption: 0,15 aw
- GUT-Prodís number: 68365BF5



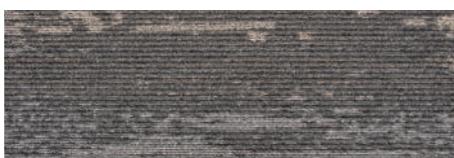
859 LRV: 15,56 - L 46,23



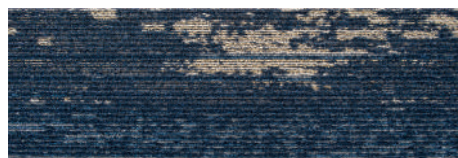
939 LRV: 12,13 - L 41,29



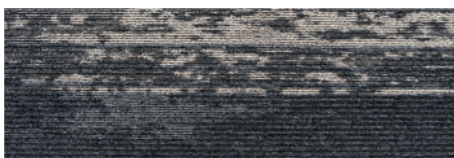
929 LRV: 17,38 - L 48,55



949 LRV: 11,21 - L 39,67



559 LRV: 6,33 - L 29,56



979 LRV: 6,47 - L 30,07

Technical Specifications

Spécifications techniques - Technische specificaties - Technische Spezifikationen

	Shared Path	Metallic Path
Construction Structure - Structuur - Konstruktion	Tufted 1/12" gauge loop	Tufted 1/12" gauge loop
Pile fibre composition composition des fibres - Poolmateriaal - Material der Polnutschicht	100% Colorstrand® Premium Nylon (40% recycled content) 100% solution dyed Pa6	100% Colorstrand® Premium Nylon (40% recycled content) 100% solution dyed Pa6
Secondary backing Envers - Rug - Beschichtung	EcoFlex™ Statera (modified bitumen, 70% recycled content)	EcoFlex™ Statera (modified bitumen, 70% recycled content)
Total weight Poids total - Totaal gewicht - Gesamtgewicht	± 4500 g/m ²	± 4500 g/m ²
Pile weight Poids du velours - Poolgewicht - Poleinsatzgewicht	± 600 g/m ²	± 600 g/m ²
Surface pile weight Poids du velours utile - Effectieve poolmassa - Polnutschichtgewicht	± 389 g/m ²	± 395 g/m ²
Total thickness Epaisseur totale - Totale dikte - Gesamtdicke	± 7,1 mm	± 7 mm
Surface pile thickness Hauteur du velours - Poolhoogte - Poldicke	± 3,6 mm	± 3,5 mm
Surface pile density Densité du velours - Pooldichtheid - Polrohdichte	± 0,107 g/cm ³	± 0,113 g/cm ³
Number of tufts Nombre de boucles - Aantal noppen - Noppenzahl	209.100/m ²	214.200/m ²
Wear classification Classement d'usage - Gebruiksklasse - Beanspruchungsklasse	EN 1307 33 / LC1	33 / LC1
Castor chair suitability Résistance aux chaises à roulettes - Rolstoelgeschiktheid - Stuhlrolleneignung	EN 985 A: intensive use	A: intensive use
Fire classification Comportement au feu - Brandgedrag - Brandklasse	EN 13501-1 Bfl-s1	Bfl-s1
Dimensional stability Stabilité dimensionnelle - Dimensionele stabiliteit - Dimensionsstabilität	EN 986 ≤ 0,2%	≤ 0,2%
Colour fastness to light Solidité des couleurs à la lumière - Lichtbestendigheid van de kleuren - Lichtechtheit	EN ISO 105-B02 ≥ 7	≥ 7
Rubbing fastness Solidité au frottement - Wrijftechtheid - Reibechtheit	EN ISO 105-X12 ≥ 4	≥ 4
Colour fastness to water Solidité à l'eau - Waterechtheid - Wasserechtheit	EN ISO 105-E01 ≥ 4	≥ 4
Thermal resistance Résistance thermique - Warmtedoorlaatweerstand - Wärmedurchlasswiderstand	ISO 8302 0,077 m ² .K/W	0,076 m ² .K/W
Sound absorption Absorption phonique - Geluidsabsorptie - Schallabsorptionsgrad	EN ISO 354 0,15 aw Hz 125 250 500 1000 2000 4000 as 0 0,05 0,05 0,15 0,3 0,3	0,15 aw Hz 125 250 500 1000 2000 4000 as 0 0 0,05 0,15 0,3 0,35
Impact sound reduction Réduction phonique aux bruits d'impacts - Reductie contactgeluid - Trittschallverbesserungsmaß	EN ISO 10140-3 ΔLw = 26 dB	ΔLw = 29 dB
Permanent antistatic Antistatique permanent - Permanent antistatisch - Permanent antistatisch	ISO 6356 ≤ 2 kV	≤ 2 kV
Number of colours Nombre de coloris - Aantal kleuren - Anzahl der Farben	6	6
Size & Packaging Dimensions & Emballage - Formaat en verpakking - Abmessungen & Verpackung	25 x 75 cm 3,75 m ² /box - 24 boxes/pallet	25 x 75 cm 3,75 m ² /box - 24 boxes/pallet
GUT-Prodís Number Numéro GUT Prodis - Nummer GUT Prodis - GUT-Prodís Nummer	6A8A980E	68365BF5
Warranty years Garantie ans - Garantie in jaren - Garantie Jahren	15	15





**CLEAN
OUT** ANTIBACTERIAL
PROTECTION



**our
collections**

Eterna

60x120 - 23^{5/8}"x47^{1/4}" 60x60 - 23^{5/8}"x23^{5/8}" 30x60 - 11^{13/16}"x23^{5/8}"

Gruppo Bla UNI EN 14411_G

拓瓷 - 修邊, 單一尺寸 / porcelain stoneware - rectified monocaliber / feinsteinzeug - rektifiziert
grès cérame émailé - rectifié monocalibre / gres porcelánico - rectificado monocalibre / керамогранит - ректифицированный монокалиберный

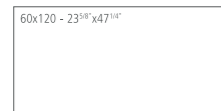
表面 / surfaces / finitions / oberflächen / superficies / поверхності:
naturale/matt + outdoor



BLANCO



H Naturale/Matt Strutturato



R8JK Eterna Blanco rettificato
R8K8 Eterna Blanco strutturato rettificato



R8JS Eterna Blanco rettificato
R8KA Eterna Blanco strutturato rettificato

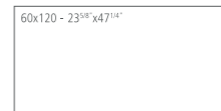


R8JZ Eterna Blanco rettificato
R8KR Eterna Blanco strutturato rettificato

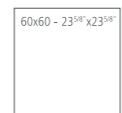
ARENA



G Naturale/Matt **H** Strutturato



R8JL Eterna Arena rettificato
R8KD Eterna Arena strutturato rettificato



R8JT Eterna Arena rettificato
R8KK Eterna Arena strutturato rettificato

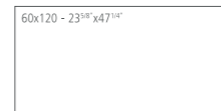


R8KO Eterna Arena rettificato
R8KS Eterna Arena strutturato rettificato

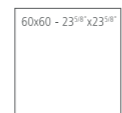
GREIGE



G Naturale/Matt Strutturato



R8JM Eterna Greige rettificato
R8KE Eterna Greige strutturato rettificato

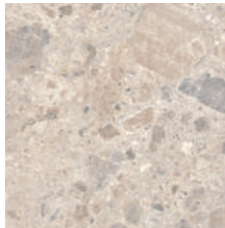


R8JU Eterna Greige rettificato
R8KL Eterna Greige strutturato rettificato

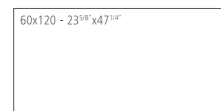


R8K1 Eterna Greige rettificato
R8KT Eterna Greige strutturato rettificato

MIX MULTICOLOR



G Naturale/Matt Strutturato



R8JN Eterna Mix Multicolor rettificato
R8KF Eterna Mix Multicolor strutturato rettificato



R8JV Eterna Mix Multicolor rettificato
R8KM Eterna Mix Multicolor strutturato rettificato

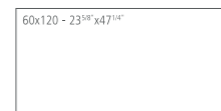


R8K2 Eterna Mix Multicolor rettificato
R8KU Eterna Mix Multicolor strutturato rettificato

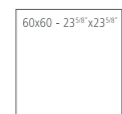
MIX BEIGE



G Naturale/Matt **H** Strutturato



R8JP Eterna Mix Beige rettificato
R8KG Eterna Mix Beige strutturato rettificato



R8JW Eterna Mix Beige rettificato
R8KN Eterna Mix Beige strutturato rettificato

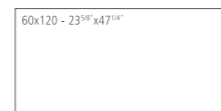


R8K3 Eterna Mix Beige rettificato
R8KV Eterna Mix Beige strutturato rettificato

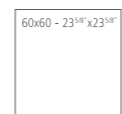
MIX GRIS



G Naturale/Matt Strutturato



R8JQ Eterna Mix Gris rettificato
R8KH Eterna Mix Gris strutturato rettificato



R8JX Eterna Mix Gris rettificato
R8KP Eterna Mix Gris strutturato rettificato



R8K4 Eterna Mix Gris rettificato
R8KW Eterna Mix Gris strutturato rettificato

Eterna

30x90 - 11^{13/16}"x35^{7/16}"

Gruppo BIII UNI EN 14411_L

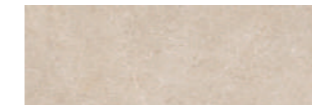
白磚 / white bodywall tiles / wandfliesen aus weissen ton scharben / revêtements en pate blanche / revestimientos en pasta blanca / облицовка из белой глины
表面 / surfaces / finitions / oberflächen / superficies / поверхності:
matt



R8HY Eterna Blanco rettificato
30x90 - 11^{13/16}"x35^{7/16}"



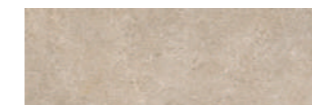
R8KY Eterna Blanco Mosaico
30x30 - 11^{13/16}"x11^{13/16}"



R8HZ Eterna Arena rettificato
30x90 - 11^{13/16}"x35^{7/16}"



R8KZ Eterna Arena Mosaico
30x30 - 11^{13/16}"x11^{13/16}"



R8JO Eterna Greige rettificato
30x90 - 11^{13/16}"x35^{7/16}"



R8LA Eterna Greige Mosaico
30x30 - 11^{13/16}"x11^{13/16}"



R8HU Eterna Blanco Struttura Quadro 3D rettificato
30x90 - 11^{13/16}"x35^{7/16}"



R8HW Eterna Greige Struttura Quadro 3D rettificato
30x90 - 11^{13/16}"x35^{7/16}"



R8HV Eterna Arena Struttura Quadro 3D rettificato
30x90 - 11^{13/16}"x35^{7/16}"



R8J2 Eterna Decoro History 3D rettificato
30x90 - 11^{13/16}"x35^{7/16}"

Per maggiori informazioni / For more information / Weitere Informationen / Pour en savoir plus / Para más información / Per maggiori informazioni www.ragno.it

tech info

*
壓製踢腳磚 / Pressed skirting tile / Gepresster Sockel / Plinthe obtenue par / pressage / Rodapié obtenido mediante prensado / Battiscopa ottenuta per pressatura
**

兩片組 L 型磚 / Two-piece L-tile / Randstein zweiteilig / Assemblé / Montado / Assemblato



玻璃纖維馬賽克拼貼磚 / Mosaic mesh - mounted on fibreglass / Auf Glasfasernetz geklebtes Mosaik / Mosaïque montée sur filet en fibre de verre / Mosaico enmallado sobre fibra de vidrio / Mosaico assemblato su rete in fibra di vetro

包裝 // packaging / verpackungen / emballages / embalajes / imballi

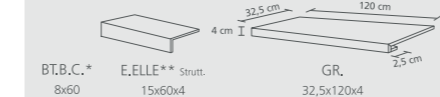
	箱數 / Box / Karton / Boîte / Caja / Scatole	片 / Pallet / Palette / Palette / Pallet / Pallet	mm
	M ²	KG	mm

普通磁磚 / plain tiles / grundfliesen / fonds / fondos / fondi

60x120 rettificato	2	1,44	31,45	36	51,84	1132,12	8,5
60x60 rettificato	3	1,08	20,28	40	43,20	811,27	8,5
30x60 rettificato	6	1,08	20,00	48	51,84	960,00	8,5

收邊條 / trims / spezialteile / pièces spéciales / piezas especiales / pezzi speciali

8x60	BT.B.C. *	21	12,60ml	20,00	8,5
15x60x4	E.ELLE		0,36ml	4,94	
32,5x120x4	GR.	2	0,78ml	17,69	



Eterna Blanco	R8MS	R8QA	R8PT
Eterna Arena	R8MT	R8QC	R8PU
Eterna Greige	R8MU	R8QD	R8PV
Eterna Mix Multicolor	R8MV	R8QF	R8PW
Eterna Mix Beige	R8MW	R8QE	R8PX
Eterna Mix Gris	R8MX	R8QG	R8PY

同一批生產過程中的磁磚質地與紋路差異清楚可辨 / Clearly distinguishable differences in texture and pattern within the same production run. / Auffällige Unterschiede in Aussehen und Struktur innerhalb der gleichen Produktionscharge. / Différences visibles au niveau de l'aspect et de la fantaisie entre les carreaux du même lot de production. / Diferencias visibles en el aspecto de la superficie y los motivos dentro de un mismo lote de producción. / Apprezzabili differenze nell'aspetto di superficie e grafica all'interno della stessa produzione.

StepWise™

採用此種新技術製成之磁磚，防滑係數高，且由於表面並無粗糙度，因此觸感柔和且容易清潔 / The tiles reduced using this new technology have a high degree of slip resistance and a surface which is soft to the touch and easy to clean, since it has no superficial roughness. / Les carreaux utilisant cette nouvelle technologie de production se distinguent par une très grande résistance à la glissance et par une surface douce au toucher et facile à nettoyer puisqu'elle ne présente aucune rugosité. / Mit dieser neuen Technologie hergestellte Fliesen zeichnen sich durch eine hohe Rutschhemmung, eine weiche Haptik und eine einfache Reinigung aufgrund der fehlenden Oberflächenrauheit aus. / Los azulejos fabricados aplicando esta nueva tecnología se caracterizan por su elevada resistencia al deslizamiento y por presentar una superficie suave al tacto y fácil de limpiar, dada la nula aspereza de su superficie. / Le piastrelle realizzate con questa nuova tecnologia sono caratterizzate da un'elevata resistenza allo scivolamento e da una superficie morbida al tatto e facile da pulire, data l'assenza di ruvidità superficiale.

包裝 // packaging / verpackungen / emballages / embalajes / imballi

	箱數 / Box / Karton / Boîte / Caja / Scatole	片 / Pallet / Palette / Palette / Pallet / Pallet	mm
	M ²	KG	mm

普通磁磚 / packaging / verpackungen / emballages / embalajes / fondi

30x90	5	1,35	21,21	40	54,00	848,52	10
裝飾件 / decorative pieces / dekore / décors / decoraciones / decori							
30x90 Struttura 3D Quadro	5	1,35	21,21	40	54,00	848,52	10
30x90 Struttura 3D History	5	1,35	20,83	40	54,00	833,33	10
30x30 Mosaico	4	0,36	6,40	60	21,60	384,00	10

Roots

60x120 - 23^{5/8}”x47^{1/4}” 60x60 - 23^{5/8}”x23^{5/8}” 30x60 - 11^{13/16}”x23^{5/8}”



WHITE



G Naturale/Matt Strutturato

60x120 - 23^{5/8}”x47^{1/4}”

R8LE Roots White rettificato
R8MA Roots White strutturato rettificato

60x60 - 23^{5/8}”x23^{5/8}”

R8LK Roots White rettificato
R8MG Roots White strutturato rettificato

30x60 - 11^{13/16}”x23^{5/8}”

R8LQ Roots White rettificato
R8MM Roots White strutturato rettificato

BEIGE



G Naturale/Matt Strutturato

60x120 - 23^{5/8}”x47^{1/4}”

R8LG Roots Beige rettificato
R8MD Roots Beige strutturato rettificato

60x60 - 23^{5/8}”x23^{5/8}”

R8LM Roots Beige rettificato
R8MJ Roots Beige strutturato rettificato

30x60 - 11^{13/16}”x23^{5/8}”

R8LS Roots Beige rettificato
R8MP Roots Beige strutturato rettificato

GREY



G Naturale/Matt Strutturato

60x120 - 23^{5/8}”x47^{1/4}”

R8LF Roots Grey rettificato
R8MC Roots Grey strutturato rettificato

60x60 - 23^{5/8}”x23^{5/8}”

R8LL Roots Grey rettificato
R8MH Roots Grey strutturato rettificato

30x60 - 11^{13/16}”x23^{5/8}”

R8LR Roots Grey rettificato
R8MN Roots Grey strutturato rettificato

MULTICOLOR



G Naturale/Matt Strutturato

60x120 - 23^{5/8}”x47^{1/4}”

R8LH Roots Multicolor rettificato
R8ME Roots Multicolor strutturato rettificato

60x60 - 23^{5/8}”x23^{5/8}”

R8LN Roots Multicolor rettificato
R8MK Roots Multicolor strutturato rettificato

30x60 - 11^{13/16}”x23^{5/8}”

R8LT Roots Multicolor rettificato
R8MQ Roots Multicolor strutturato rettificato

Roots

30x90 - 11^{13/16}”x35^{7/16}”



白磚 / white body wall tiles / wandfliesen aus weissen ton scherben / revêtements en pate blanche / revestimientos en pasta blanca / облицовка из белой глины

表面 / surfaces / finitions / oberflächen / superficies / поверхности: nature/matt + outdoor matt



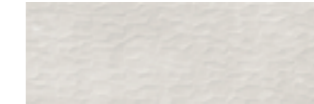
R8JA Roots White rettificato
30x90 - 11^{13/16}”x35^{7/16}”



R8J8 Roots Grey rettificato
30x90 - 11^{13/16}”x35^{7/16}”



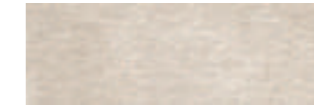
R8J9 Roots Beige rettificato
30x90 - 11^{13/16}”x35^{7/16}”



R8JH Roots White Strutturato District 3D rettificato
30x90 - 11^{13/16}”x35^{7/16}”



R8JG Roots Grey Strutturato District 3D rettificato
30x90 - 11^{13/16}”x35^{7/16}”



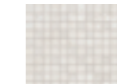
R8JF Roots Beige Strutturato District 3D rettificato
30x90 - 11^{13/16}”x35^{7/16}”



R8JD Roots Decoro Bluwall Grey rettificato
30x90 - 11^{13/16}”x35^{7/16}”



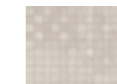
R8PM Roots Decoro Bluwall Beige rettificato
30x90 - 11^{13/16}”x35^{7/16}”



R8PP Roots White Mosaico
30x30 - 11^{13/16}”x11^{13/16}”



R8PR Roots Grey Mosaico
30x30 - 11^{13/16}”x11^{13/16}”



R8PQ Roots Beige Mosaico
30x30 - 11^{13/16}”x11^{13/16}”

Per maggiori informazioni / For more information / Weitere Informationen / Pour en savoir plus / Para más información / Per maggiori informazioni www.ragno.it

tech info

壓製踢腳磚 / Pressed skirting tile / Gespresster Sockel / Plinthe obtenue par / pressage / Rodapié obtenido mediante prensado / Battiscopa ottenuto per pressatura

兩片組 L 型磚 / Two-piece L-tile / Randstein zweiteilig / Assemblé / Montado / Assemblato



玻璃纖維馬賽克拼貼磚 / Mosaic mesh - mounted on fibreglass / Auf Glasfasernetz geklebtes Mosaik / Mosaïque montée sur filet en fibre de verre / Mosaico enmallado sobre fibra de vidrio / Mosaico assemblato su rete in fibra di vetro



	8x60	15x60x4	32,5x120x4
Roots White	R8QU	R8QP	R8QJ
Roots Grey	R8QW	R8QR	R8QL
Roots Beige	R8QV	R8QQ	R8QK
Roots Multicolor	R8QX	R8QS	R8QM

戶外表面 60x120、60x60、30x60 公分之磁磚組裝，建議留縫寬度為 4 mm / The recommended joint for the modular installation of the outdoor surface in the 60x120, 60x60 and 30x60 cm sizes is 4 mm. / Nous recommandons un joint de 4 mm pour la pose modulaire de la surface outdoor dans les formats 60x120, 60x60 et 30x60 cm. / Für die modulare Verlegung des Außenbelags in den Formaten 60x120, 60x60 und 30x60 cm wird eine Fuge von 4 mm empfohlen. / La junta de separación recomendada para la colocación modular en superficies exteriores en los formatos de 60 x 120, 60 x 60 y 30 x 60 cm es de 4 mm. / La fuga consigliata per la posa modulare della la superficie outdoor nei formati 60x120, 60x60 e 30x60 cm è di 4 mm.

包裝 / packaging / verpackungen / emballages / embalajes / imballi

箱數 / Box / Karton / Boîte / Caja / Scatole | 片 / Pallet / Palette / Palette / Pallet / Pallet

M² KG

普通磁磚 / plain tiles / grundfliesen / fonds / fondos / fondi	箱數 / Box / Karton / Boîte / Caja / Scatole	片 / Pallet / Palette / Palette / Pallet / Pallet	重量 / Weight / Gewicht / Peso / Peso
60x120 rettificato / strutturato	2	1,44	27,99 36 51,84 1007,98 8,5
60x60 rettificato / strutturato	3	1,08 20,71 40 43,20 828,54 8,5	8,5
30x60 rettificato / strutturato	6	1,08 20,52 48 51,84 985,36 8,5	8,5

收邊條 / trims / spezialteile / pièces spéciales / piezas especiales / pezzi speciali

收邊條 / trims / spezialteile / pièces spéciales / piezas especiales / pezzi speciali	收邊條 / trims / spezialteile / pièces spéciales / piezas especiales / pezzi speciali	收邊條 / trims / spezialteile / pièces spéciales / piezas especiales / pezzi speciali	收邊條 / trims / spezialteile / pièces spéciales / piezas especiales / pezzi speciali
8x60	BT.B.C.	21	12,60 ml 20,00
15x60x4	E.ELLE strutt.	4	0,36 ml 4,94
32,5x120x4	GR.		2,40 ml 20,00

包裝 / / packaging / verpackungen / emballages / embalajes / imballi

箱數 / Box / Karton / Boîte / Caja / Scatole | 片 / Pallet / Palette / Palette / Pallet / Pallet

M² KG

普通磁磚 / packaging / verpackungen / emballages / embalajes / fondi

普通磁磚 / packaging / verpackungen / emballages / embalajes / fondi	箱數 / Box / Karton / Boîte / Caja / Scatole	片 / Pallet / Palette / Palette / Pallet / Pallet	重量 / Weight / Gewicht / Peso / Peso
30x90	5	1,35 21,21 40 54,00 848,52 10	10
30x90 struttura 3D Quadro	5	1,35 21,21 40 54,00 848,52 10	10
30x90 struttura 3D History	5	1,35 20,83 40 54,00 833,33 10	10
30x30 Mosaico	4	0,36 6,40 60 21,60 384,00 10	10

StepWise™

採用此種新技術製成之磁磚，防滑係數高，且由於表面並無粗糙度，因此觸感柔和且容易清潔 / The tiles produced using this new technology have a high degree of slip resistance and a surface which is soft to the touch and easy to clean, since it has no superficial roughness. / Les carreaux utilisant cette nouvelle technologie de production se distinguent par une très grande résistance à la glissance et par une surface douce au toucher et facile à nettoyer puisqu'elle ne présente aucune rugosité. / Mit dieser neuen Technologie hergestellte Fliesen zeichnen sich durch eine hohe Rutschhemmung, eine weiche Haptik und eine einfache Reinigung aufgrund der fehlenden Oberflächenrauheit aus. / Los azulejos fabricados aplicando esta nueva tecnologia se caracterizan por su elevada resistencia al deslizamiento y por presentar una superficie suave al tacto y fácil de limpiar, dada la nula aspereza de su superficie. / Le piastrelle realizzate con questa nuova tecnologia sono caratterizzate da un'elevata resistenza allo scivolamento e da una superficie morbida al tatto e facile da pulire, data l'assenza di ruvidità superficiale.



同一批生產過程中的磁磚質地與紋路差異清楚可辨 / Clearly distinguishable differences in texture and pattern within the same production run. / Auffällige Unterschiede in Aussehen und Struktur innerhalb der gleichen Produktionscharge. / Différences visibles au niveau de l'aspect et de la fantaisie entre les carreaux du même lot de production. / Diferencias visibles en el aspecto de la superficie y los motivos dentro de un mismo lote de producción. / Apprezzabili differenze nell'aspetto di superficie e grafica all'interno della stessa produzione.



同一批生產過程中，每一片磁磚的質地、紋路顏色差異明顯。挑選材料前應檢視顏色範圍 / Significant variation in texture, pattern and colour from tile to tile within the same production run. The colour range should be viewed before selecting the material. / Bedeutende Variation in Aussehen, Struktur und Farbe von Fliese zu Fliese und in ein und derselben Fliese. Es wird empfohlen, das Farbsortiment vor der Auswahl des Materials zu prüfen. / Variation significative au niveau de l'aspect, de la fantaisie et de la couleur entre les carreaux et au sein d'un même carreau. Il est recommandé de consulter la gamme des couleurs avant de sélectionner le matériel. / Variación considerable en el aspecto superficial, los motivos y el color entre un azulejo y otro y dentro del propio azulejo. Es aconsejable visualizar la gama cromática antes de seleccionar el material. / Significativa variazione di aspetto superficiale, grafica e colore da piastrella a piastrella e all' interno della stessa piastrella. Si consiglia di visionare la gamma cromatica prima della selezione del materiale.

Future-proof, for you and for the planet

在百僱企業，我們真正相信以未來為中心產品。這就是為什麼我們花時間停頓並反省整個戰略和運營影響的原因。但我們也意識到，行動勝於雄辯，因此，這就是我們日復一日提高可持續性行業標準的方式。

Through our certified processes, skilled and inspired people and product portfolio that combines good value and corporate social responsibility, we really make the difference, for you and for the planet

- 通過節約資源和減少浪費
我們將製造和分銷業務對環境的影響降至最低
- 精選的節能地板製造工廠
達到同類產品中最優質和最環保永續的
- 我們投資於清潔空氣技術和最先進的製造方法
- 我們盡可能採用可回收或再生材料
考慮環保油墨和可回收的PVC
- 我們要求所有供應商負責確保以負責任的方式生產產品
—— 尊重勞動和環境

